

Toilet, Bath, and Shower Spaces

R307.1 Space Required

Fixtures shall be spaced in accordance with Figure R307.1, and in accordance with the requirements of the state plumbing code Section 402.5.

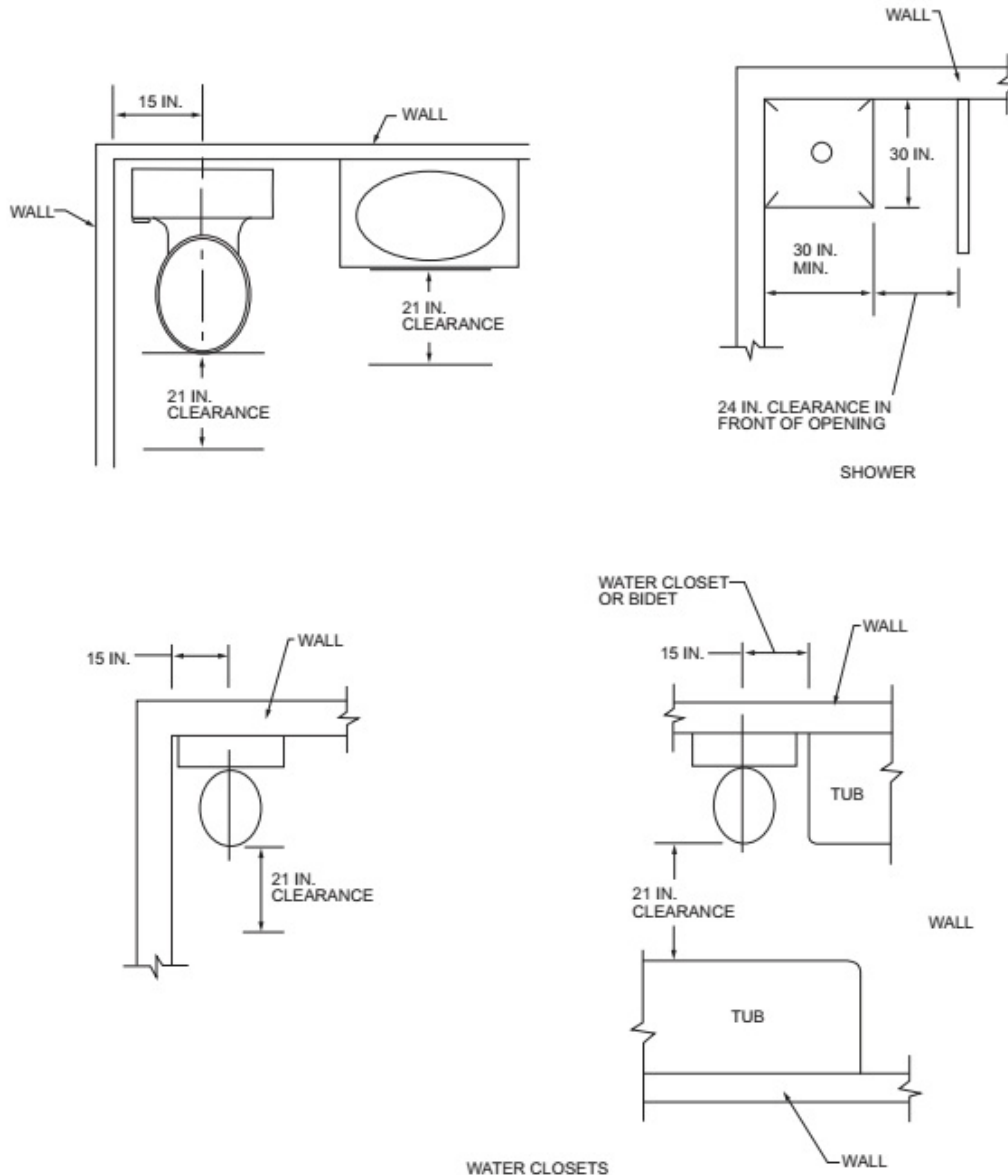


FIGURE R307.1
 MINIMUM FIXTURE CLEARANCES

R307.2 Bathtub and Shower Spaces

Bathtub and shower floors and walls above bathtubs with installed shower heads and in shower compartments shall be finished with a nonabsorbent surface. Such wall surfaces shall extend to a height of not less than 6 feet above the floor.